

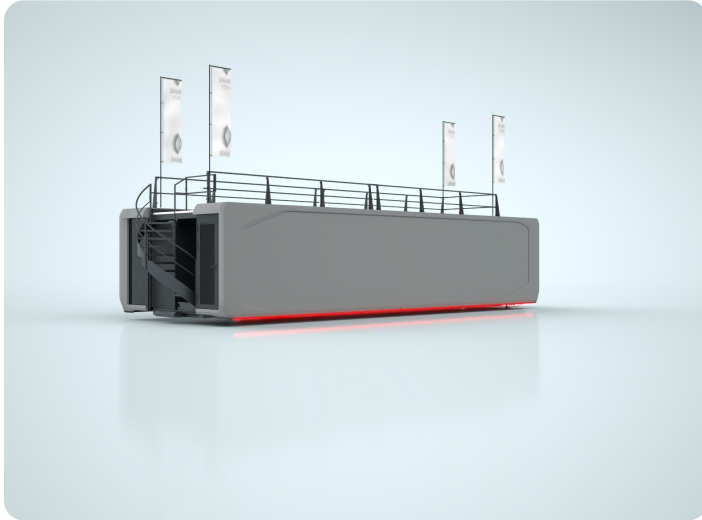
# Touchdown 44ft



**Expandable Touchdown 44ft**  
**€ 395,400 Excl. VAT**

[www.expandable-trailers.com](http://www.expandable-trailers.com)

# Your configuration



## PRODUCT AND SHAPE

**Product**

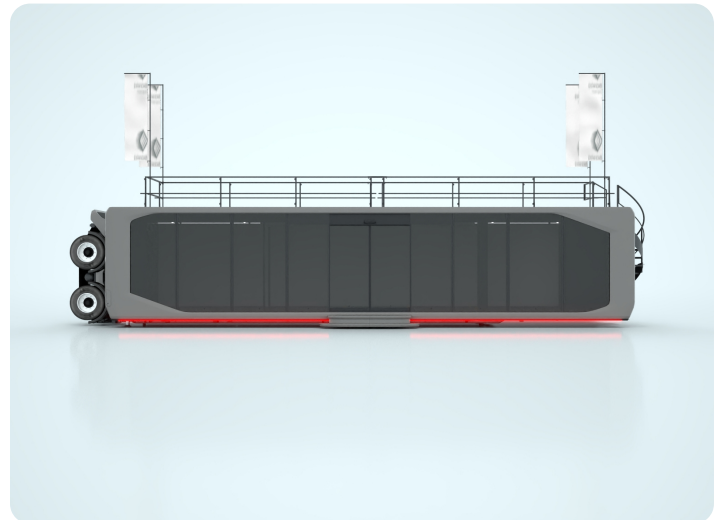
Touchdown 44ft

**Shape**

Octagon

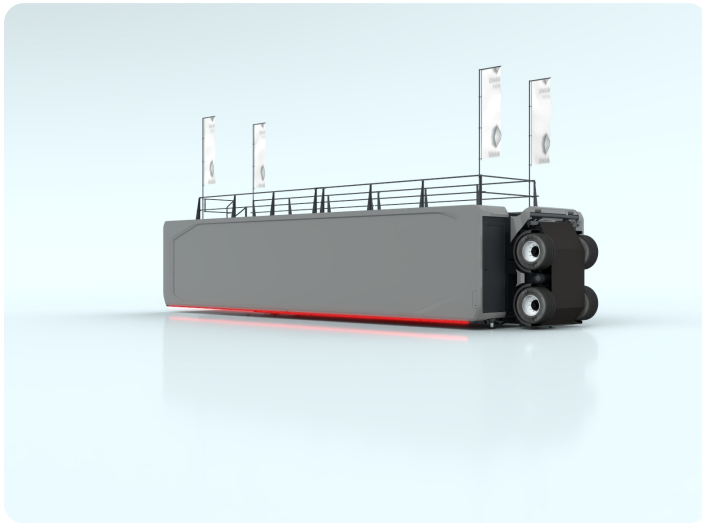
## SIDES CONFIGURATION

|                        |  |
|------------------------|--|
| <b>Front left</b>      | Door with glass                                      |
| <b>Front middle</b>    | Roof deck entry with Stairs                          |
| <b>Front right</b>     | Premium glass  |
| <b>Left side</b>       | Solid wall   |
| <b>Right side</b>      | Premium glass with electric sliding doors & doorstep |
| <b>Rear left</b>       | Door with panel                                      |
| <b>Rear middle</b>     | Large tech hub                                       |
| <b>Rear right</b>      | Premium glass  |
| <b>Roof terrace</b>    | Roof terrace   |
| <b>Roof grid left</b>  | -  |
| <b>Roof grid right</b> | -  |



## Expandable Touchdown 44ft

Octogon | L 13,6 x B 4,83 x H 3,00 (in meters)



## COLORS

### Main color

Pearl dark grey

### Frame color

Black grey

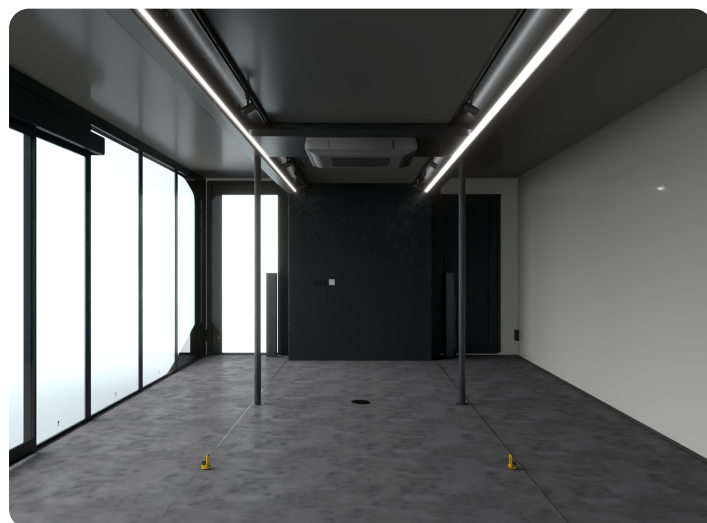
## COOLING AND HEATING

### Air conditioning

High-capacity dual AC

### Ventilation and heating

-



## INTERIOR FLOOR

### Floor type

PVC Vintage Zinc Silver

## LIGHTING

### Flexrails

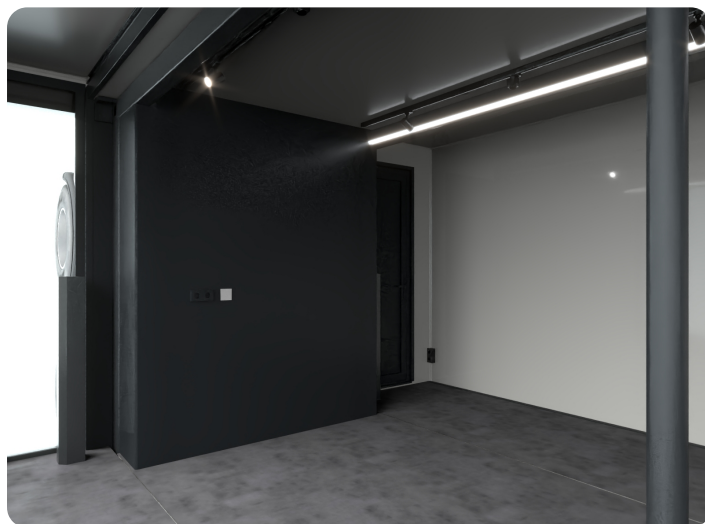
Flex rails  
LED spots (12 pcs)  
Electricity sockets (set of 4)

### Interior LED lights

Inner LED lines (cool-white) (2x)

### Exterior LED lines left and right

LED lines (warm white)



## EXTRA COMPONENTS

|  |   |
|--|---|
| <b>Sockets</b>                         | Double electricity socket   |
| <b>Pods</b>                            | Two electricity ground pods   |
| <b>Ramps</b>                           | -   |
| <b>Door-step</b>                       | -   |
| <b>Wrapping aluminium parts</b>        | Interior wrapping aluminium parts (Interior wrapping aluminium parts - white) |
| <b>Automatic levelling system</b>      | Included  |
| <b>Power Solar Battery</b>             | -   |
| <b>Restroom module</b>                 | -   |
| <b>Power generator 12kVa</b>           | -   |
| <b>Wheel chair access ramp</b>         | -   |
| <b>TV-mount</b>                        | -   |
| <b>TUV Baubuch certification</b>       | -   |
| <b>Car ramp &amp; Turntable system</b> | -   |

## Expandable Touchdown 44ft

Octogon | L 13,6 x B 4,83 x H 3,00 (in meters)



## CARGO LASHING POINTS

### Capacity

Cargo lashing points M16 (set of 6)



**any questions?**  
contact us

+31(0)85 890 21 88  
info@expandable.com



**EXPANDABLE**  
movable spaces

[www.expandable-trailers.com](http://www.expandable-trailers.com)